



PACKETEER®

## Packeteer's PolicyCenter™

Centralized Management for PacketShaper® and AppVantage™ Product Lines

PacketShaper and AppVantage analyze and control performance of Internet-enabled applications. PolicyCenter is a software package that simplifies the task of deploying PacketWise-enabled appliances throughout your network. With PolicyCenter, you can create and manage network-wide application performance policies with no more effort than it would take to set policies on a single device.

*Centrally  
Manage  
PacketWise-  
enabled  
Appliances*

*Publish Policies  
in a Single Step*

*Distribute New  
Software  
Releases  
Efficiently*

### Where PolicyCenter Helps

Both PacketShaper and AppVantage offer the most benefits when deployed as network edge solutions — PacketShaper at branch offices and AppVantage at subscribers' locations. As the size of a deployment grows, the associated administrative tasks grow too. Configuration changes and software updates must be repeated for every PacketWise-enabled appliance. PolicyCenter supplies economy of scale for large deployments.

General network management platforms, such as HP's OpenView and PolicyXpert, are still the appropriate choice for centralized management of diverse, multi-vendor environments.

When organizations specifically want cen-

tralized control of PacketWise-enabled appliances, then PolicyCenter is the appropriate solution.

### Centralized Management and Control

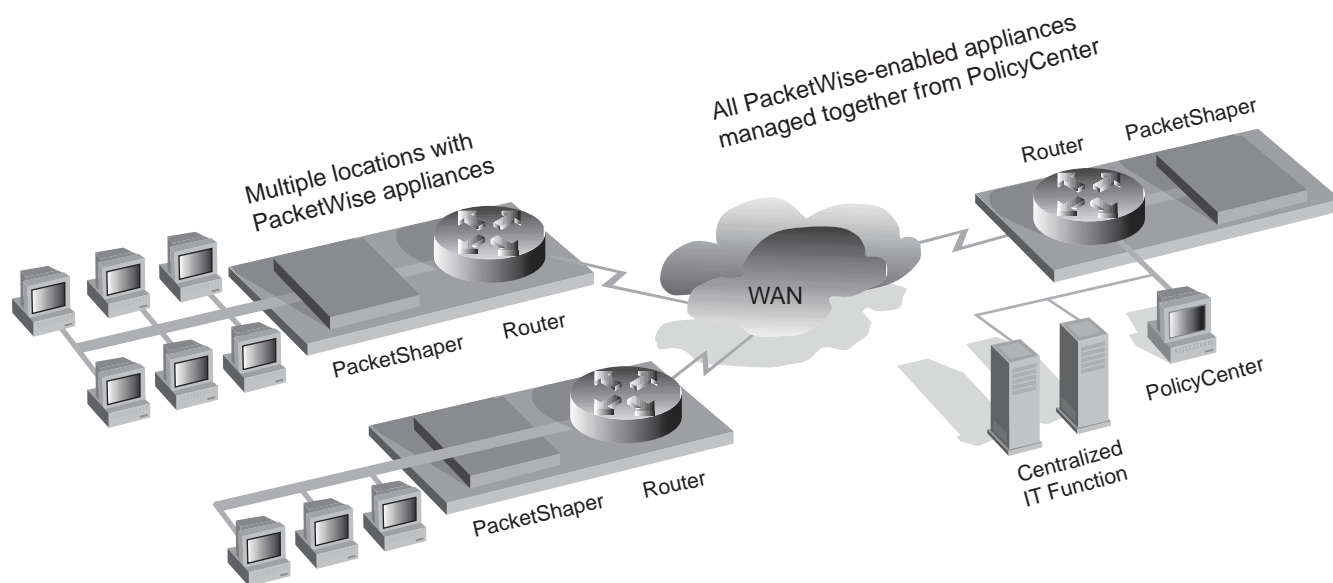
PolicyCenter enables network managers to:

- Deploy network-wide partitions and policies across multiple PacketWise-enabled appliances.
- Distribute PacketWise software upgrades.
- View a summary of the status of all managed PacketWise-enabled appliances.
- Disseminate traffic classes for new categories of applications or traffic.
- Publish definitions of events of interest
- Respond quickly on an enterprise scale to network or application performance changes.
- Minimize the administrative overhead and total cost of ownership of PacketWise-enabled appliances.
- Configure multiple PacketShapers simultaneously.





PACKETEER®



## Ease of Use

PolicyCenter greatly simplifies multi-unit deployment by centralizing configuration tasks and the software-upgrade process and by providing an overview of all managed devices. Its web-based user interface has a similar look and feel to other PacketWise-enabled devices, so network managers familiar with PacketShaper or AppVantage will have little difficulty using PolicyCenter. Installation is simple, using a standard InstallShield executable wizard. Initial group configurations can be created from scratch or based upon a PacketWise configuration for a device that's already in use.

## PolicyCenter Specifications

### Technical Specifications

- Provides centralized management for as many as 200 PacketWise devices.
- Includes Netscape Directory Server 4.13 and its associated console.
- Group configurations can be shared among multiple PacketWise devices
- Customization is possible on a location-by-location basis by overriding configuration and policy settings.
- PolicyCenter has a LDAP-based architecture.
- A duplicate configuration is stored locally by each PacketWise appliance to lessen the impact of server failure.

### Installation and Operational Requirements

- Operating System (only English versions supported): Microsoft Windows NT, version 4.0 with Service Pack 6; Microsoft Windows 2000 with Service Pack 1.0 or higher
- Memory: 128 Mbs, minimum; 256 Mbs, recommended
- Disk Space: 600 Mbs free disk space
- Browser Version: Netscape Communicator 4.7 or higher; Microsoft Internet Explorer 5.0 or higher; or Netscape Navigator
- Managed PacketShaper and AppVantage appliances: PacketWise Version 5.0.6 or higher is required
- 400Mhz or faster Pentium II-compatible processor
- Monitor that supports 16-bit color or better
- NTFS file system



PACKETEER®

10495 N. De Anza Blvd. - Cupertino, CA 95014

Tel: (408) 873-4400 - Fax: (408) 873-4410 - [www.packeteer.com](http://www.packeteer.com)

2000-2001 Packeteer, Inc. All rights reserved. Packeteer, PacketShaper, AppVantage, AppCelera, PacketWise and PolicyCenter are trademarks or registered trademarks of Packeteer, Inc. All other trademarks are property of their respective owners.

1110.B 3/02